



Burney Drive, Loughton, IG10

BUTLER & STAG



Enviably positioned, this delightful four bedroom semi detached family home is in a popular location of Loughton within good school catchment areas.



Freehold

- Semi Detached Family Home
- Spacious Living Room/Separate Dining Area
- Off Street Parking
- Four Bedrooms
- First Floor Garden
- Downstairs WC

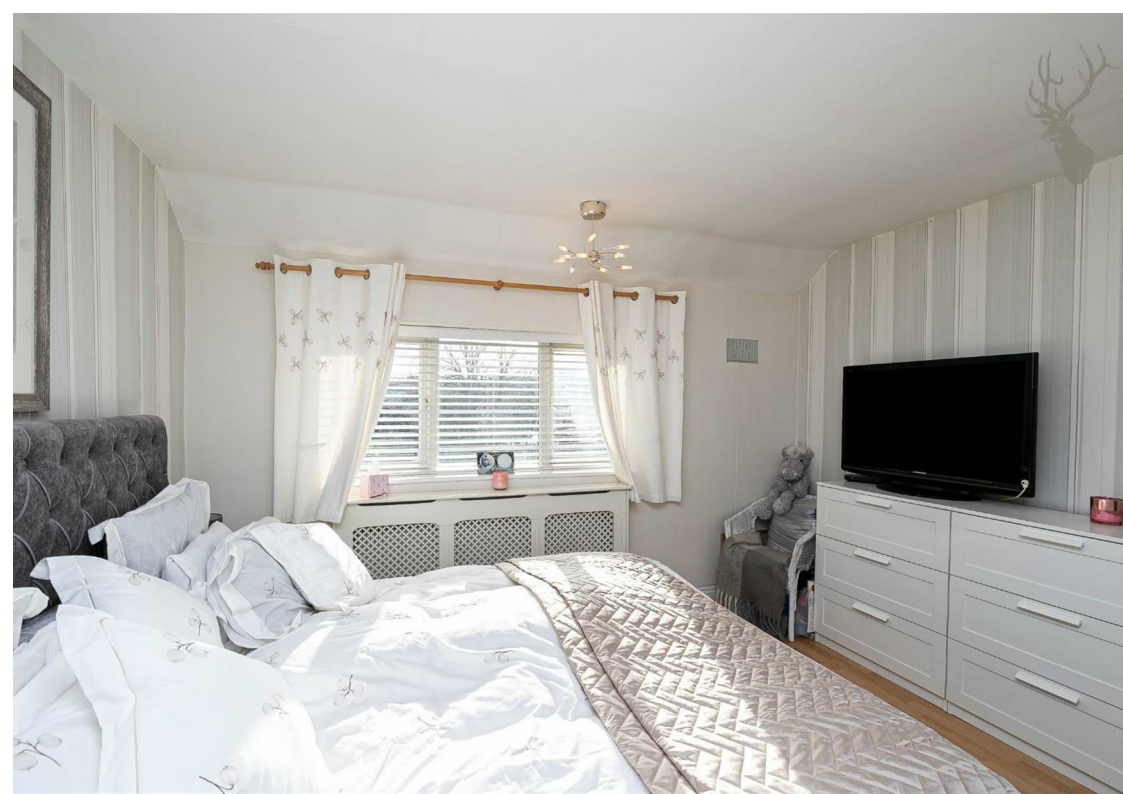
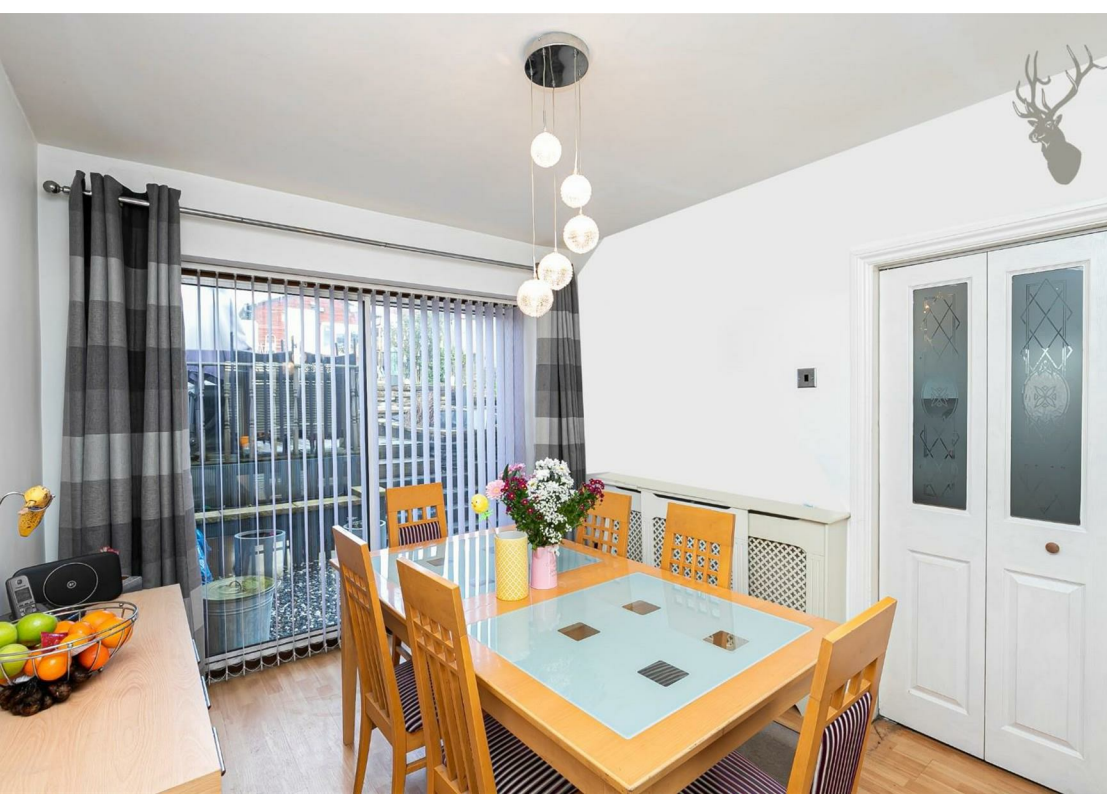
This stunning example of a family home is arranged over two floors. Accommodation comprising entrance hall, spacious living room, dining area alongside a fully fitted kitchen and a downstairs WC.

On the first floor there are four bedrooms, as well as a family bathroom.

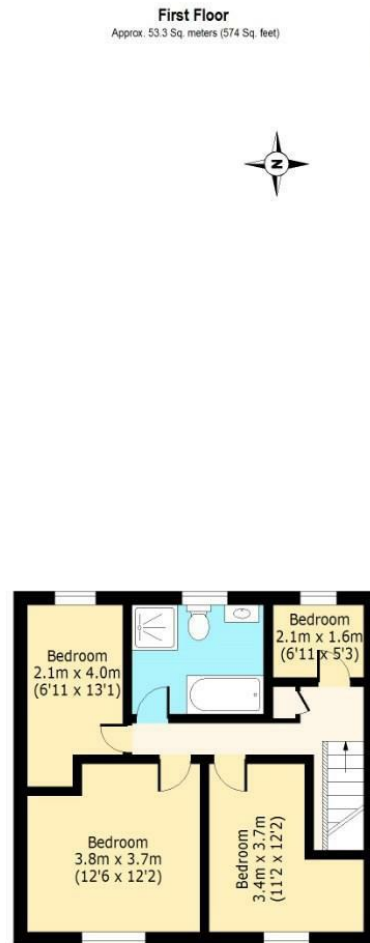
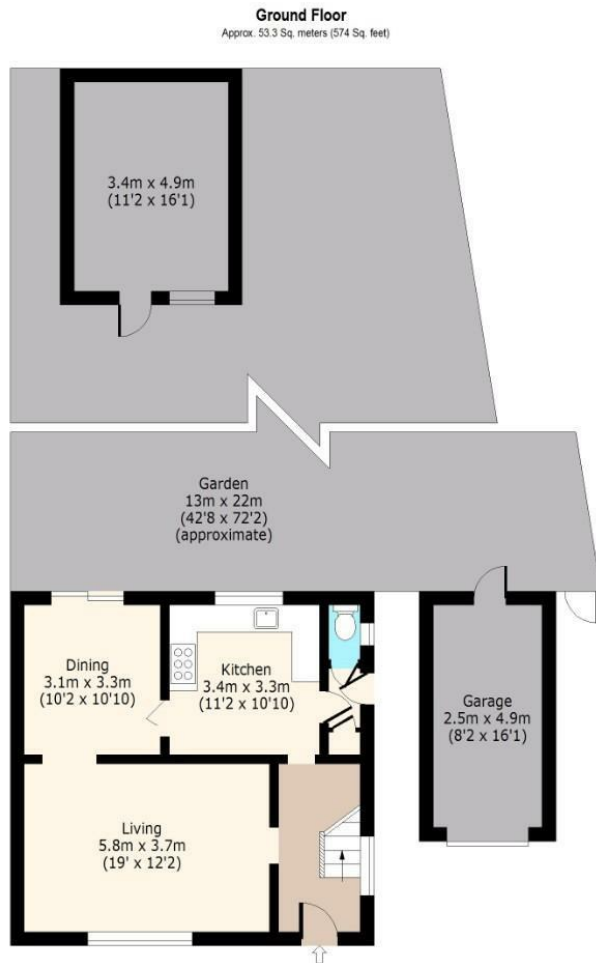
Externally, the north facing garden has decking that leads on to a patio area which is perfect for those summer nights with a small lawn that leads to the rear of the garden. There is also a paved driveway which allows access for off street parking for two/Three vehicles.

Loughton is known for its scenic views and being on the border of Epping Forest. It has excellent transport links into London from Loughton underground station, with the M11 and M25 being close by. With its highly regarded state and private schools within easy reach, its stylish, popular boutiques and abundance of eateries/bars makes it a desirable location.





Burney Drive



Total area: approx. 106.6 Sq. meters (1148 Sq. feet)
Out Building 27.4 Sq. meters (295 Sq. feet)
For illustration purposes only - not to scale
www.lpaplus.com

BUTLER & STAG

☎ 01992 667666

🏠 4 Forest Drive, Theydon Bois, Essex, CM16 7EY

✉ theydon@butlerandstag.com

www.butlerandstag.uk

IMPORTANT NOTICE - These particulars have been prepared in good faith and they are not intended to constitute part of an offer or contract. We have not performed a structural survey on this property and the services, appliances and specific fittings have not been tested. All photographs, measurements, floor plans and distances referred to are given as a guide and should not be relied upon.